



# Schedule at a Glance – Fall '11 thru Spring '12

Denotes a FULL Class

3/08/12

## Preschool / Kindergarten Combo Classes

### Pre-School 1

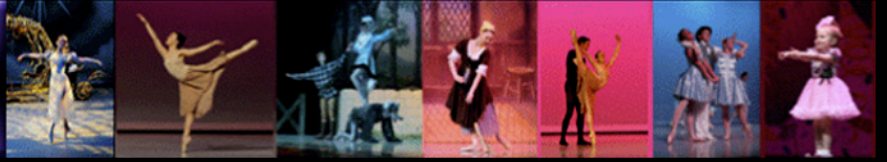
Monday 1:00 pm	(3 and 4 year olds)	Studio #2	Ms. Jill
Wednesday 6:30 pm	(3 and 4 year olds)	Studio #3	Ms. Jill
Saturday 9:00 am	(3 and 4 year olds)	Studio #2	Ms. Ann

### Pre-School 2

Monday 6:30 pm	(4 year olds)	Studio #3	Ms. Jill
Tuesday 10:00 am	(4 year olds)	Studio #2	Ms. Jill
Thursday 1:00 pm	(4 year olds)	Studio #2	Ms. Jill
<b>Saturday 10:00 am</b>	<b>(4 year olds)</b>	<b>Studio #2</b>	<b>Ms. Ann</b>

### Kindergarten Combo

Monday 4:30 pm	(Kindergarteners)	Studio #2	Ms. Ann
Tuesday 6:30 pm	(Kindergarteners)	Studio #3	Ms. Jill
Wednesday 5:30 pm	(Kindergarteners)	Studio #3	Ms. Jill
Saturday 11:00 am	(Kindergarteners)	Studio #2	Ms. Ann



## Schedule at a Glance – Fall '11 thru Spring '12

### Combo 1 & Combo 2 Classes

#### **Combo 1**

Monday 5:30 pm	(1 <sup>st</sup> & 2 <sup>nd</sup> graders)	Studio #3	Ms. Missy
Wednesday 4:30 pm	(1 <sup>st</sup> & 2 <sup>nd</sup> graders)	Studio #2	Ms. Missy
Thursday 6:30 pm	(1 <sup>st</sup> & 2 <sup>nd</sup> graders)	Studio #3	Ms. Jill

#### **Combo 1/2**

Saturday 10:00 am	(1 <sup>st</sup> & 2 <sup>nd</sup> graders)	Studio #3	Ms. Missy
-------------------	---	-----------	-----------

#### **Combo 2**

Wednesday 6:30 pm	(2 <sup>nd</sup> & 3 <sup>rd</sup> graders)	Studio #2	Ms. Missy
-------------------	---	-----------	-----------

### Ballet Classes

#### **Ballet 1 (2<sup>nd</sup> – 3<sup>rd</sup>)**

Thursday 4:30 pm	(2 <sup>nd</sup> & 3 <sup>rd</sup> graders)	Studio #1	Ms. Lisa
------------------	---	-----------	----------

#### **Ballet 1 (4<sup>th</sup> – 6<sup>th</sup>)**

Tuesday 4:30 pm	(4 <sup>th</sup> – 6 <sup>th</sup> graders)	Studio #1	Ms. Lisa
-----------------	---	-----------	----------

#### **Ballet 1 (7<sup>th</sup> & Up)**

Thursday 7:30 pm	(7 <sup>th</sup> grade & Up)	Studio #3	Ms. Laura
------------------	------------------------------	-----------	-----------

#### **Ballet 2 (3<sup>rd</sup> – 5<sup>th</sup>)**

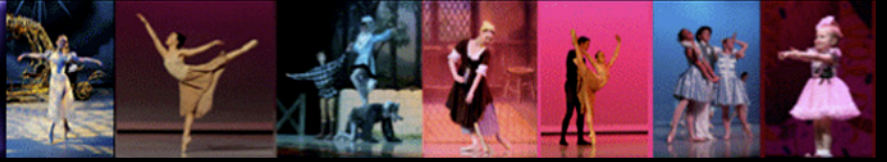
Tuesday 5:30 pm	(3 <sup>rd</sup> thru 5 <sup>th</sup> grades)	Studio #1	Ms. Lisa
Thursday 5:30 pm	(3 <sup>rd</sup> thru 5 <sup>th</sup> grades)	Studio #1	Ms. Lisa

#### **Ballet 2 (6<sup>th</sup> & Up)**

Tuesday 5:30 pm	(6 <sup>th</sup> grade & Up)	Studio #3	Ms. Laura
-----------------	------------------------------	-----------	-----------

#### **Ballet 3 (4<sup>th</sup> – 6<sup>th</sup>)**

Tuesday 6:30 pm	(4 <sup>th</sup> thru 6 <sup>th</sup> )	Studio #1	Ms. Lisa
Thursday 6:30 pm	(4 <sup>th</sup> thru 6 <sup>th</sup> )	Studio #1	Ms. Lisa



## Schedule at a Glance – Fall '11 thru Spring '12

### **Ballet 3 (7<sup>th</sup> & Up)**

Wednesday 7:30 pm (7<sup>th</sup> & Up) Studio #1 Ms. Laura

### **Ballet 4\*\*+ (This is a 1 & ½ hour class, 2X's a week)**

Monday 4:00 - 5:30 pm (5<sup>th</sup> grade and up) Studio #5 Ms. Laura

Tuesday 4:00 - 5:30 pm (5<sup>th</sup> grade and up) Studio #5 Ms. Laura

Wednesday 4:00 – 5:30 pm (5<sup>th</sup> grade and up) Studio #1 Ms. Lisa

### **Ballet 5\*\*+ (This is a 1 & ½ hour class, 2X's a week)**

Monday 4:00 – 5:30 pm (6<sup>th</sup> grade and up) Studio #1 Ms. Lisa

Wednesday 4:00 – 5:30 pm (6<sup>th</sup> grade and up) Studio #5 Ms. Laura

Thursday 4:00 – 5:30 pm (6<sup>th</sup> grade and up) Studio #5 Ms. Laura

### **Ballet 6\*\*\* (This is a 2 hour class, 2X's a week)**

Monday 5:30 – 7:30 pm (7<sup>th</sup> grade and up) Studio #5 Ms. Laura

Tuesday 7:30 – 9:30 pm (7<sup>th</sup> grade and up) Studio #1 Ms. Lisa

Wednesday 5:30 – 7:30 pm (7<sup>th</sup> grade and up) Studio #6 Ms. Laura

Thursday 7:30 – 9:30 pm (7<sup>th</sup> grade and up) Studio #1 Ms. Lisa

### **Ballet 7\*\*\* (This is a 2 hour class, 2X's a week)**

Monday 5:30 – 7:30 pm (8<sup>th</sup> grade and up) Studio #1 Ms. Lisa

Tuesday 5:30 – 7:30 pm (8<sup>th</sup> grade and up) Studio #6 Mr. Christopher

Thursday 5:30 – 7:30 pm (8<sup>th</sup> grade and up) Studio #6 Ms. Laura

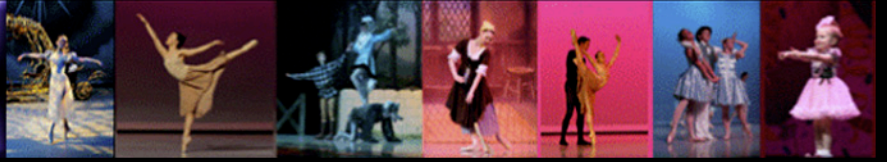
### **Ballet 8\*\*\* (This is a 2 hour class, 2X's a week)**

Monday 5:30 – 7:30 pm (9<sup>th</sup> grade and up) Studio #6 Mr. Christopher

Wednesday 5:30 – 7:30 pm (9<sup>th</sup> grade and up) Studio #1 Ms. Lisa

### **Miller- Marley Youth Ballet Company Class\* (This is a 1 ½ Hour Class!)**

Saturday 10:30 am – Noon (MMYB members only) Studio #6 Ms. Laura



## Schedule at a Glance – Fall '11 thru Spring '12

### Ballet Variations/Pointe

#### Ballet Variations/Pointe

Wednesday 7:30 pm (Ballet Level 6 & Up) Studio #3 Ms. Lisa

### Ballet Partnering Class^

#### Ballet Partnering Class^

Tuesday 7:30 pm (Invitation only!) Studio #3 Mr. Christopher

### Jazz Partnering Class^

#### Jazz Partnering Class^

Thursday 5:30 pm (Invitation only!) Studio #6 Ms. Erin

### Jazz Classes

#### Jazz 1 (2<sup>nd</sup> – 3<sup>rd</sup>)

Thursday 5:30 pm (2<sup>nd</sup> & 3<sup>rd</sup> graders) Studio #2 Ms. Annie

#### Jazz 1 (4<sup>th</sup> – 6<sup>th</sup>)

Tuesday 5:30 pm (4<sup>th</sup> – 6<sup>th</sup> graders) Studio #5 Ms. Annie

#### Jazz 1 (7<sup>th</sup> & Up)

Thursday 8:30 pm (7<sup>th</sup> & Up) Studio #2 Mr. Brian

#### Jazz 2 (3<sup>rd</sup> – 5<sup>th</sup>)

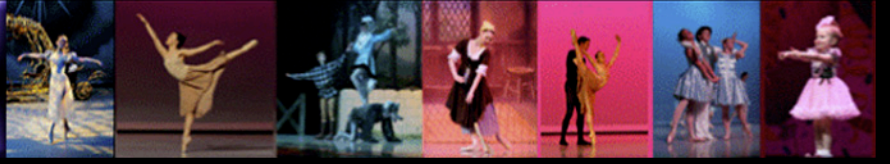
Tuesday 6:30 pm (3<sup>rd</sup> thru 5<sup>th</sup> grades) Studio #4 Ms. Annie

Thursday 6:30 pm (3<sup>rd</sup> thru 5<sup>th</sup> grades) Studio #2 Ms. Annie

#### Jazz 2 (6<sup>th</sup> – Up)

Monday 8:30 pm (6<sup>th</sup> grade & Up) Studio #2 Mr. Brian

Tuesday 6:30 pm (6<sup>th</sup> grade & Up) Studio #5 Mr. Brian



## Schedule at a Glance – Fall '11 thru Spring '12

### **Jazz 3 (4<sup>th</sup> – 6<sup>th</sup>)**

Tuesday 7:30 pm	(4 <sup>th</sup> thru 6 <sup>th</sup> )	Studio #2	Ms. Annie
Thursday 7:30 pm	(4 <sup>th</sup> thru 6 <sup>th</sup> )	Studio #2	Ms. Annie

### **Jazz 3 (7<sup>th</sup> & Up)**

Wednesday 8:30 pm	(7 <sup>th</sup> & Up)	Studio #5	Ms. Erin/Mr. Brian
-------------------	------------------------	-----------	--------------------

### **Contemporary Jazz 4**

Wednesday 5:30 pm	(5 <sup>th</sup> grade & Up)	Studio #2	Ms. Tara
Thursday 5:30 pm	(5 <sup>th</sup> grade & Up)	Studio #5	Ms. Erin

### **Contemporary Jazz 5**

Wednesday 5:30 pm	(6 <sup>th</sup> grade & Up)	Studio #5	Ms. Erin
Thursday 5:30 pm	(6 <sup>th</sup> grade & Up)	Studio #3	Ms. Tara

### **Contemporary Jazz 6**

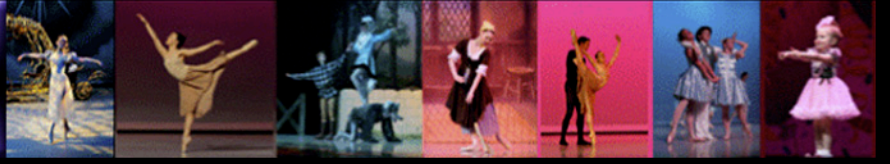
Monday 7:30 pm	(7 <sup>th</sup> grade & Up)	Studio #1	Ms. Tara
Wednesday 7:30 pm	(7 <sup>th</sup> grade & Up)	Studio #6	Mr. David

### **Contemporary Jazz 7**

Monday 7:30 pm	(8 <sup>th</sup> grade & Up)	Studio #5	Mr. David
Thursday 7:30 pm	(8 <sup>th</sup> grade & Up)	Studio #6	Ms. Erin

### **Contemporary Jazz 8**

Monday 8:30 pm	(9 <sup>th</sup> grade and up)	Studio #5	Ms. Erin
Tuesday 5:30 pm	(9 <sup>th</sup> grade and up)	Studio #4	Ms. Tara
Thursday 6:30 pm	(9 <sup>th</sup> grade and up)	Studio #5	Ms. Erin



## Schedule at a Glance – Fall '11 thru Spring '12

### Broadway Jazz Classes

#### **Broadway Jazz 4/5**

**Monday 5:30 pm** (Level 4 & 5 Jazz students only) Studio #2 Ms. Ann

Tuesday 4:30 pm (Level 4 & 5 Jazz students only) Studio #2 Ms. Ann

#### **Broadway Jazz 6**

Tuesday 5:30 pm (Level 6 Jazz students only) Studio #2 Ms. Ann

#### **Broadway Jazz 7/8**

Tuesday 7:30 pm (Level 7 & 8 Jazz students only) Studio #6 Ms. Ann

### Hip Hop Classes

#### **Hip Hop 1/3**

Tuesday 7:30 pm (4<sup>th</sup> – 6<sup>th</sup> grades) Studio #5 Ms. Tara

Thursday 7:30 pm (4<sup>th</sup> – 6<sup>th</sup> grades) Studio #5 Ms. Tara

#### **Hip Hop 1/3**

Monday 8:30 pm (7<sup>th</sup> grade & Up) Studio #1 Ms. Tara

#### **Hip Hop 4/5**

Wednesday 7:30 pm (Level 4 & 5 Jazz students only) Studio #5 Ms. Tara

#### **Hip Hop 6**

Thursday 6:30 pm (Level 6 Jazz students only) Studio #4 Ms. Tara

#### **Hip Hop 7/8**

Monday 4:30 pm (Level 7 & 8 Jazz students only) Studio #6 Ms. Tara

Wednesday 8:30 pm (Level 7 & 8 Jazz students only) Studio #1 Ms. Tara



## Schedule at a Glance – Fall '11 thru Spring '12

### Leaps and Turns Classes

#### Leaps and Turns 4/5

Monday 6:30 pm (Level 4 & 5 Jazz students only) Studio #2 Ms. Ann

#### Leaps and Turns 6

Tuesday 6:30 pm (Level 6 Jazz students only) Studio #2 Ms. Ann

#### Leaps and Turns 7/8

Tuesday 8:30 pm (Level 7 & 8 Jazz students only) Studio #6 Ms. Ann

### Lyrical Jazz Classes

#### Lyrical Jazz 4/5

Wednesday 6:30 pm (Level 4 & 6 Jazz students only) Studio #5 Ms. Tara

#### Lyrical Jazz 6

Thursday 4:30 pm (Level 4 & 6 Jazz students only) Studio #3 Ms. Tara

#### Lyrical Jazz 7/8

Wednesday 4:30 pm (Level 7 & 8 Jazz students only) Studio #6 Ms. Tara

Thursday 8:30 pm (Level 7 & 8 Jazz students only) Studio #5 Ms. Tara

### Modern Dance Classes

#### Modern Dance 4/6

Monday 7:30 pm (Level 4 thru 6 Jazz students only) Studio #2 Ms. Erin

#### Modern Dance 7/8

Wednesday 7:30 pm (Level 7 & 8 Jazz students only) Studio #2 Ms. Erin



## Schedule at a Glance – Fall '11 thru Spring '12

### Tap Classes

#### Tap 1 (2<sup>nd</sup> – 3<sup>rd</sup>)

Tuesday 4:30 pm (2<sup>nd</sup> & 3<sup>rd</sup> graders) Studio #3 Ms. Jill

#### Tap 1 (4<sup>th</sup> - 6<sup>th</sup>)

Wednesday 4:30 pm (4<sup>th</sup> & 6<sup>th</sup> graders) Studio #3 Ms. Jill

#### Tap 1 (7<sup>th</sup> & Up)

Monday 5:30 pm (7<sup>th</sup> grade & Up) Studio #4 Ms. Jill

#### Tap 2 (3<sup>rd</sup> – 5<sup>th</sup>)

Monday 4:30 pm (3<sup>rd</sup> – 5<sup>th</sup> grades) Studio #4 Ms. Jill  
Thursday 4:30 pm (3<sup>rd</sup> – 5<sup>th</sup> grades) Studio #2 Ms. Jill

#### Tap 2 (6<sup>th</sup> & Up)

Tuesday 7:30 pm (6<sup>th</sup> grade & Up) Studio #4 Ms. Jill

#### Tap 3 (4<sup>th</sup> – 6<sup>th</sup>)

Thursday 5:30 pm (4<sup>th</sup> – 6<sup>th</sup> grades) Studio #4 Ms. Jill  
Saturday 9:00 am (4<sup>th</sup> – 6<sup>th</sup> grades) Studio #5 Ms. Jill

#### Tap 4

Wednesday 6:30 pm (5<sup>th</sup> grade and up) Studio #4 Ms. Shirley

#### Tap 4 (4<sup>th</sup> – 5<sup>th</sup>)

Saturday Noon (4<sup>th</sup> & 5<sup>th</sup> grades only!) Studio #4 Ms. Shirley

#### Tap 5

Wednesday 5:30 pm (6<sup>th</sup> grade and up) Studio #4 Ms. Shirley  
Saturday 9:00 am (6<sup>th</sup> grade and up) Studio #4 Ms. Shirley

#### Tap 6

Monday 6:30 pm (7<sup>th</sup> grade and up) Studio #4 Ms. Shirley  
Wednesday 4:30 pm (7<sup>th</sup> grade and up) Studio #4 Ms. Shirley



## Schedule at a Glance – Fall '11 thru Spring '12

### Tap 7

Wednesday 7:30 pm	(8 <sup>th</sup> grade and up)	Studio #4	Ms. Shirley
Thursday 4:30 pm	(8 <sup>th</sup> grade and up)	Studio #4	Ms. Shirley

### Tap 8

Tuesday 4:30 pm	(9 <sup>th</sup> grade and up)	Studio #4	Ms. Shirley
Thursday 7:30 pm	(9 <sup>th</sup> grade and up)	Studio #4	Ms. Shirley

### Tap 9^

Tuesday 8:30 pm	(^ denotes by invitation only)	Studio #4	Ms. Shirley
-----------------	--------------------------------	-----------	-------------

## Adult Classes

### Adult Ballet

Wednesday 8:30 pm	(Adults only!)	Studio #2	Ms. Lisa
-------------------	----------------	-----------	----------

### Adult Hip Hop

Tuesday 8:30 pm	(Adults only!)	Studio #5	Ms. Tara
-----------------	----------------	-----------	----------

### Beg. Adult Theatre Jazz

Monday 8:30 pm	(Adults only!)	Studio #3	Ms. Ann
----------------	----------------	-----------	---------

### Cont. Adult Theatre Jazz

Monday 7:30 pm	(Adults only!)	Studio #3	Ms. Ann
----------------	----------------	-----------	---------

### Beg. Teen/Adult Tap

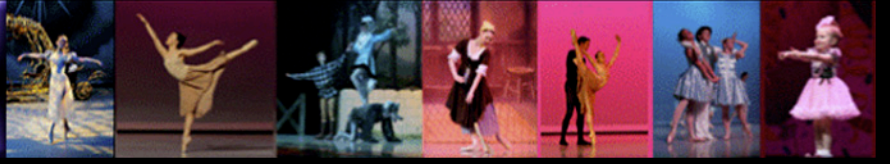
Thursday 8:30 pm	(Adults only!)	Studio #4	Ms. Shirley
------------------	----------------	-----------	-------------

### Cont. Adult Tap

Monday 8:30 pm	(Adults only!)	Studio #4	Ms. Shirley
----------------	----------------	-----------	-------------

### Adv. Inter. Adult Tap

Monday 7:30 pm	(Adults only)	Studio #4	Ms. Shirley
----------------	---------------	-----------	-------------



## Schedule at a Glance – Fall '11 thru Spring '12

### Pilates Mat Classes

#### Pilates Mat Class

Wednesday 8:30 pm (6<sup>th</sup> grade & Up) Studio #3 Ms. Hilary

### TiniTainer Class

#### TiniTainer Class<sup>^</sup>

Saturday 9:00 am (TiniTainer Members only) Studio #1 Ms. Missy & Ms. Annie

### Tumbling

#### Tumbling 2

Sunday Noon (6<sup>th</sup> grade & Up) Studio #6 Ms. Christine

(Tumbling 2: Tumbling 2 will work on front and back walkovers, front and back handsprings and aerials, continuing our emphasis on technique of all basic skills.)

#### Tumbling 1

Sunday 1:00 pm (2<sup>nd</sup> grade & Up) Studio #6 Ms. Christine

(Tumbling 1: Tumbling 1 will consist of handstands, front limbers, right and left cartwheels, working on technique to move on to more advanced skills. Having a front limber and cartwheels on both sides is a requirement for Tumbling 2.)



## Schedule at a Glance – Fall '11 thru Spring '12

### Performing Companies^

#### TiniTainer's^

Saturday 10:00 – 11:30 am (TiniTainer Members only) Studio #1 Ms. Annie & Mr. Brian

#### MiniTainers Rehearsal^

Saturday 10:00 – Noon (MiniTainer Members only) Studio #5 Ms. Jill

#### Show Biz Performers Rehearsal^

Sunday 1:00 - 3:00 pm (Junior SBP Members only) Studio #1 Mr. Brian & Ms. Julie

Sunday 2:00 - 4:00 pm (Senior SBP Members only) Studio #1 Mr. Brian & Ms. Julie

#### Entertainers White Troupe Rehearsal^

Sunday 1:00 – 3:00 pm (Entertainer only) Studio 5 & 2 Ms. Ann & Ms. Annie

#### Entertainers Red Troupe Rehearsal^

Sunday 2:00 - 4:00 pm (Entertainer only) Studio 5 & 2 Ms. Ann & Ms. Annie

#### Competition Team Rehearsals^

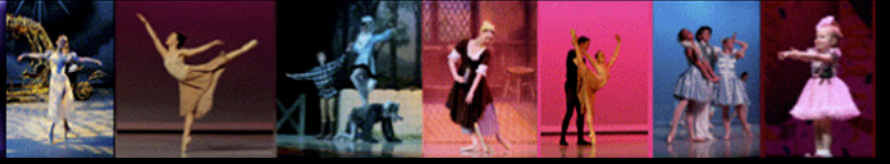
Wednesday & Thursday 8:30 to 9:30 pm (CT Members only) Studio #6

Sunday 4:30 to 9:30 pm (CT Members only) Studio #6 Ms. Erin & Ms. Tara

#### Miller- Marley Youth Ballet Company Rehearsal^

Monday 7:30 to 9:30 pm (MMYB Members only) Studio #6 Ms. Laura

Saturday Noon – 4:00 pm (MMYB Members only) Studio #6 Ms. Laura



## Schedule at a Glance – Fall '11 thru Spring '12

### Coterie Theatre Classes

To enroll in the Coterie Theatre please call 816-474-4241

<http://www.coterietheatre.org/classes.aspx>

#### **SPRING CLASSES**

Grades are for the 2011-2012 school year

[Classes \(K-1st Grade\)](#)

[Classes \(2-4th Grade\)](#)

[Classes \(5-7th Grade\)](#)

[Classes \(8-12th Grade\)](#)

### K-1st Grade Animalia

Animals and their habitats will inspire young actors as they explore how to use their bodies, faces, and voices to develop settings, characters, and dramatic situations. Based on the fantastical illustrations of Graeme Base's *Animalia*.

DATES: Saturdays, March 24-May 5

TIME: 1:30-3:00p.m.

FEE: \$95

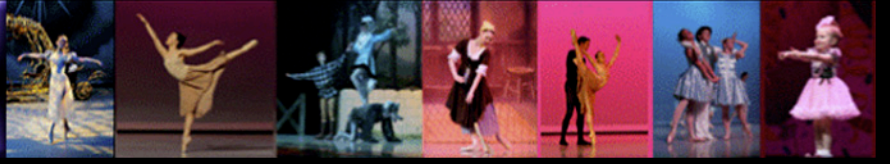
### 2-4th Grade Theatre Sampler

At each class, students will explore a different element of theatre that will enhance their skills in collaboration, critical thinking, and creativity. The Teaching Artist will introduce participants to basic acting and improv games, warm-up techniques, prop construction, stage combat, and movement skills.

DATES: Saturdays, March 24-May 5

TIME: Noon-1:30pm

FEE: \$95



## Schedule at a Glance – Fall '11 thru Spring '12

### 5-7th Grade Audition Lab

The Teaching Artist will help participants choose audition monologues that match their age, personality, and individual audition needs. Students will develop successful strategies for cold readings and learn how to prepare a professional resume. The final class includes a special audition with Jeff Church, Coterie Producing Artistic Director, or a member of the Coterie staff, for youth roles in the upcoming Coterie season!

DATES: Saturdays, March 24-May 5

TIME: 1:30-3:00p.m.

FEE: \$95

### 8-12th Grade \*Acting: Techniques

Young actors learn to overcome obstacles, pursue objectives, and create tactics for characters through acting exercises. The Teaching Artist will introduce students to the Meisner, Stanislavski, and Hagan acting techniques that develop honesty in performance and commitment to character.

DATES: Saturdays, March 24-May 5

TIME: Noon-1:30pm

FEE: \$95

### Audition Lab

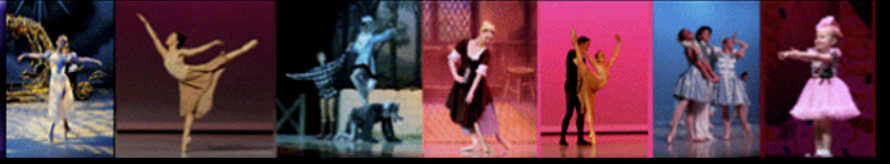
The Teaching Artist will help participants choose audition monologues that match their age, personality, and individual audition needs. Students will develop successful strategies for cold readings and learn how to prepare a professional resume. The final class includes a special audition with Jeff Church, Coterie Producing Artistic Director, or a member of the Coterie staff, for youth roles in the upcoming Coterie season!

DATES: Saturdays, March 24-May 5

TIME: 1:30-3:00p.m.

FEE: \$95

**To enroll in the Coterie Theatre please call 816-474-4241**  
<http://www.coterietheatre.org/classes.aspx>



## Schedule at a Glance – Fall '11 thru Spring '12

### Private Vocal Lessons

**Kristi Tucker**                      **816-589-4141**  
Girls 8 years of age and up

**Julia Johnson**                      **816-547-4111**  
Girls 7 years of age and up

**Jay Coombes**                      **913-322-6452**  
Boys & Girls 7 years of age and up

### Private Piano Lessons

**Jan Lord**                              **913-475-7752**  
Boys & Girls 6 years of age and up